



Student Handbook

2025-2026

Mountain Home Junior High School Student Handbook

Principal/Activities Director: Ryan Kuntz
Admin. Asst: Judy Blanchard
Receptionist: Tera Sell
Counselor: Jennifer Sirani

Assistant Principal: Cassandra Nordin
Attendance Sec: Stephanie Leopard
Registrar: Jennifer Poe

Mountain Home Junior High School

Let us hear your “ROAR”

RESPECTFUL **O**PEN MINDED **A**CCOUNTABLE **R**ESILIENT

Respectful

- Show courtesy and respect to others
- Use acceptable language at all time, free of name calling, insults or profanity
- Take care of school grounds, property and equipment

Open Minded

- Share equipment and demonstrate good sportsmanship
- Leave toys, games, laser pens, personal electronic devices and other devices that distract from learning at home.
- Listen, follow directions, participate and cooperate

Accountable

- Eat in designated areas only and keep the school clean, free of litter
- Interact with each other safely without pushing or roughness
- Come to school and class on time, prepared to work and study
- Remain on school grounds from the time of arrival to dismissal- MJHS is a closed campus.

Resilient

- Settle differences without put-downs, threats, cyberbullying, bullying, harassment or fighting
- Ask staff for help as needed for conflict resolution
- Walk in a safe and orderly manner while on school property.

Activity Code of Conduct:

Students involved in extracurricular and co-curricular activities—including athletics, music, drama, clubs, and elected positions—are privileged to participate in unique opportunities. When representing our school at other venues, students embody the pride and traditions of our community, coaches, and peers. They are expected to uphold the highest standards of behavior at all times. Any violation of the school’s drug, alcohol, or tobacco policies will result in consequences as outlined in the school regulations.

Athletic Eligibility:

A student must be marked present in at least four (3) of seven (6) periods on the day of competition or performance. Truant or suspended students are not allowed to participate or practice in any activity or athletic event. Participants must be enrolled full-time, and have passing grades in all subjects. **They must also purchase an activity card.**

Attendance Policy:

Students who do not attend ten (10) consecutive days will be unenrolled.

It is the parent/guardian's responsibility to contact the school as soon as possible to notify the school of their child's lengthy absence and to make arrangements to continue the child's education. Please call the Jr. High as close to 7:30 as possible to notify the school of absences. The phone number is 208 587-2590.

Prior to disenrolling a student, the school will send a letter to the most recent address on file informing the parent/guardian of the impending disenrollment. The letter will also inform the parent that the grade at the end of the tenth day will be the grade recorded in the student's cumulative/permanent record.

If a secondary student, especially those students who are in jeopardy of losing credits, withdraws from school ten (10) days before the end of semester, the student will need administrative approval for early completion of the semester.

- **Tardies:** Being on time is part of being accountable for your education. Students are expected to arrive at class on time. If a student is late without a valid excuse, they will get a warning. On the 4th, 6th, and 8th tardy, the student will have to serve a lunch detention. After that, any more tardies may lead to lunch detention and/or a visit to the office.

Backpacks:

Students are encouraged to only bring materials necessary to class and leave other belongings in their lockers.

Backpacks are not allowed in classrooms.

Bicycles, Skateboards & Scooters:

If you ride a bike to school, bikes and scooters need to be parked on the bike rack. Lock your bike or scooter. The school is not responsible for damage or theft while bikes are parked on campus. Skateboards may be used only for transportation to and from school, and must be locked in lockers. For safety reasons, none of these modes of transportation may be ridden or stood upon anywhere on campus.

Buying or Selling:

No items are to be bought or sold without the consent and approval of the principal's office. Items will be confiscated without consideration for monetary loss.

Cafeteria/Eating Area:

Students may bring lunch from home or choose from the Junior High cafeteria options. There is a full lunch service in the cafeteria and a Snack Bar near the front office for quick snacks. Free and reduced-price meals are available for those who qualify.

Our school-wide goal is to keep all shared eating areas clean and tidy. Students should wait their turn in line, move forward in an orderly way, and use good manners while eating. All cafeteria purchases must be paid for at the time of service; the office does not loan money. Repeated failure to follow cafeteria rules may result in losing these privileges.

Eating is only allowed in the cafeteria and designated areas—no eating is permitted in the academic wings or gym. If litter becomes a problem, extra privileges may be restricted for all students.

Canvas Learning Management System (CLMS):

Teachers will maintain their Canvas site to allow students, parents, and administrative staff to access lessons, assignments, grades and communicate with teachers.

***NEW* Cell Phones and Electronic Devices:**

The use of cell phones and other electronic devices, including headphones, and smart watches, is **not allowed during school hours**. All students are required to turn off their personal communication devices, including watches that can communicate with a phone or earbuds of any kind, and securely stored in their lockers upon arrival at school. A personal communication device must be stored away during all school hours, including passing periods, lunch, etc. All personnel are mandated to enforce this policy on campus (Stored away at 7:50 AM to 2:56 PM)

Personal communication use and or storage location accommodations may be made for students with medical or health needs. (e.g. diabetic monitoring). In these case by case circumstances, phone use and/or storage will be determined by administration or the IEP/504 team.

All students are provided with a Chromebook for schoolwork, so there is no need to access personal phones during school hours.

Students are **prohibited from taking any pictures, videos, or voice recordings on school grounds or buses** without explicit permission from school administration. This includes selfies. Uploading images or videos of other students to social media or websites without their permission is also forbidden.

Consequences for Violations:

- **1st violation:** The device will be confiscated until the end of the day and a phone call to parents will be made by office staff letting me know of the violation
- **2nd violation:** The device will be confiscated and a meeting between parent/guardian with administration must be held before reclaiming the device.
- **3rd violation:** The student will receive a behavioral referral for insubordination and receive out-of-school suspension for disciplinary action.

Chromebooks:

Every student will be issued a chromebook to use for academic purposes. Students are not allowed to bring their own computers without administrative permission. Students will be allowed to take them home in order to complete their homework. Once you are issued a chromebook, immediately change the password. **DO NOT** loan your chromebook to anyone and allow them to use your login. Students are responsible for taking proper care of their chromebooks and charging cords. If chargers or chromebooks are lost or damaged, they will need to be paid for by the student. If damages occur on a persistent basis, the student may be limited to only using a chromebook at school or may lose access to a chromebook altogether. **Chromebook Protection Plans can be purchased. The plans can be purchased on the webstore page on the junior high website. Students will be issued one charger per year with their chromebook and it must be returned at the end of each year. If the charger is not returned, the student will not be issued another one the following school year.**

Class Changes:

Requests for 1st semester changes may be made immediately following registration or within the first week of the first semester. Requests for changes for the 2nd semester will begin in January, after Christmas break. The window to change classes is one week from the start date of semester 2.

Classroom Procedure & General Conduct:

Students must behave respectfully and responsibly at all times, both in and out of the classroom. They are accountable for their actions on their way to and from school, during school hours, on school transportation, and at all school events. Mountain Home staff and adult volunteers actively supervise and support students to maintain a safe and positive learning environment. Our goal is to help students develop a mindset of respect and personal responsibility.

Daily Schedule:

The building opens for students at 7:20 a.m. each day. Students who need to request early dismissal should first check in with their teacher before proceeding to the school office. The doors will be locked promptly at 4:00 p.m., and students are expected to avoid unnecessary loitering in the building after 3:30 p.m. Please see the graphic below for a breakdown of our daily class schedules (A and B day schedules), our assembly schedule, and our late start schedule.

Bell Schedules 2025-26

Daily Schedule (A Days)

Monday, Thursday, Friday

1st Period	2nd Period	3rd Period	4th Period (8th)	5th Period (7th)	6th Period	7th Period	
7:50-8:51	8:56-9:57	10:02-11:03	11:08-12:09	11:43-12:44	12:49-1:50	1:55-2:55	
			Lunch (7th)	Lunch (8th)			
			11:03-11:38	12:09-12:44			

Advisory Schedule (B Days) Tuesday, Wednesday

Advisory	1st Period	2nd Period	3rd Period	4th Period (8th)	5th Period (7th)	6th Period	7th Period
7:50-8:10	8:15-9:12	9:17-10:14	10:19-11:16	11:21-12:18	11:56-12:53	12:58-1:55	2:00-2:56
				7th Lunch	8th lunch		
				11:16-11:51	12:18-12:53		

Assembly Schedule

1st Period	2nd Period	3rd Period	4th Period (8th)	5th Period (7th)	6th Period	7th Period	Assembly
7:55-8:46	8:50-9:41	9:45-10:36	10:40-11:32	11:10-12:02	12:06-12:57	1:01-1:52	1:52-2:55
			Lunch (7th)	Lunch (8th)			
			10:36-11:06	11:32-12:02			

Late Start Schedule

1st Period	2nd Period	3rd Period	4th Period (8th)	5th Period (7th)	6th Period	7th Period	
10:00-10:41	10:45-11:26	11:30-12:11	12:15-12:56	12:45-1:26	1:30-2:11	2:15-2:55	
			Lunch (7th)	Lunch (8th)			
			12:11-12:41	12:56-1:26			

1:30 Release

1st Period	2nd Period	3rd Period	4th Period (8th)	5th Period (7th)	6th Period	7th Period	
7:50-8:37	8:41-9:28	9:32-10:19	10:23-11:10	11:01-11:48	11:52-12:39	12:43 -1:30	
			Lunch (7th)	Lunch (8th)			
			10:19-10:57	11:10-11:48			

Disci

Mountain Home Junior High School upholds behavioral standards that foster an orderly and respectful learning environment. Our objective is to cultivate self-discipline in students and encourage sound judgment regarding appropriate behavior. We maintain the principle that no student should disrupt the learning experience of others.

Each teacher reviews their classroom discipline policy with students at the start of the school year, with rules and expectations clearly posted. In addition, school-wide behavioral expectations are communicated by staff and reinforced throughout the campus to ensure consistency and support a positive school climate.

Dress Code:

Students are expected to come to school properly dressed and prepared to participate in their education for the day. Students are encouraged to “**dress for success**” as we are helping them grow into future leaders. Clothing worn to school should be comfortable and appropriate for school activities.

1. Clothing and jewelry with writing or designs that depict prejudice, sexual innuendos, pornography, violence (including guns), unlawful acts, tobacco, drugs or alcohol are prohibited.
2. Clothing that reveals underwear, bare stomach and or back is prohibited, including spaghetti straps and tank tops with narrow straps. Pants are to be worn above the buttocks.
3. Chains, large rings, jewelry, belts or shoes that may be used or seen as weapons are not allowed on campus.
4. Clothing or property that displays gang related symbols, emblems, or other gang identifiers are prohibited.
5. Sunglasses may not be worn in the building unless required for medical reasons.
6. Clothing shorter than mid-thigh (fingertip length), regardless of under garments, are prohibited.
7. Bandanas, hats, hoods, slippers, pajamas, clothing with holes above the mid-thigh are prohibited.
8. Capes and flags worn as capes are not permitted.

Violations- The following will be the steps to correcting a dress code violation:

1. Administrative conference and correction of the problem (change or turn inside out).
2. We will make every effort to provide the violating student with loaner clothing (if needed) in order to return to class. Inappropriate clothing will be labeled and can be picked up after school from the campus supervisor or an administrator.
3. If proper clothing cannot be provided by MHJH, the student will remain in the quiet room until the parent can provide a change of clothes.

Drugs:

Mountain Home Junior High adheres to District guidelines prohibiting the possession, use, or distribution of drugs, alcohol, vapor cigarettes, and tobacco on school property. Local law enforcement will be notified in cases involving students who use, distribute, or possess illegal drugs, alcohol, tobacco, or vaping products.

For information regarding the proper procedures for students requiring access to over-the-counter or prescription medications, please refer to the section titled **Medications** below.

Emergency Management Plan:

Students and staff will regularly participate in drills for lockdowns, bomb threats, fire emergencies, and other safety procedures. Any student who refuses to follow these procedures or disobeys staff instructions will face appropriate disciplinary consequences.

Extracurricular Activities Attendance:

Participation in or attendance at school-sponsored activities like sports, concerts, and dances are great chances to support your classmates and have fun with friends. Even though these events happen after school, all school rules still apply.

1. To attend any extracurricular activity, students must be present for at least three periods during the school day. Students serving in-school or out-of-school suspensions on the day of the event are prohibited from attending.
2. Students must remain within the designated event areas, whether at the football stadium, gymnasium, or other locations, until the event is over or until they choose to leave. Hanging out in unauthorized areas such as hallways, playgrounds, or parking lots is not allowed. Students who exit the event early will not be permitted to return.
3. Positive and respectful behavior is expected at all times. Students should cheer in support of their team and show courtesy to opponents and their supporters. Behavior such as booing, heckling, or use of vulgar and inappropriate language will not be tolerated.

DANCES

Dance

Policy:

Dances are open to current Mountain Home Junior High students only. To attend, students must have been present for at least three periods on the day of the dance. Students assigned to In-School Suspension (ISS) that day are not allowed to participate.

Students must bring their current school ID to enter. Attendance at dances is a privilege reserved for students who demonstrate good behavior. Final approval to attend is at the discretion of school administration.

Attending after school activities is a privilege. Don't lose your privileges by disregarding these expectations.

Lockers:

Lockers are a privilege provided to all students for storing books and backpacks. Students are responsible for managing their time to use their lockers and get to class promptly.

Keep your locker combination private to protect your belongings. The school is not responsible for lost or stolen items. Misuse or damage to lockers may result in losing locker privileges.

The school owns the lockers and staff may inspect them at any time. Only school-appropriate items should be stored inside lockers.

Leave of Absence:

If a student plans to be absent more than five consecutive days, a leave of absence form needs to be filled out two days prior to absence. If the absence will take place before finals, prior arrangements must be made for the student to take their finals. This request must be approved by the administration.

Lost and Found:

Please label all personal items—such as clothing, books, and sports equipment—with your name using permanent ink. The school is not responsible for lost belongings. Items turned in to the office with clear names will be returned to their owners. Unmarked items will be placed in the Lost and Found, located by the bus doors. Be sure to check there if you lose something. Unclaimed items are donated to local charities.

Make-up Work:

If a student misses school, any papers, assignments, or tests announced before the absence are due on the day the student returns.

For excused absences, students have two days to make up work for each day they were gone. However, make-up work will not exceed five school days after a student returns from the absence.

Make-up work may not be allowed for unexcused or unverified absences. Some classes, especially those that involve participation, may not offer make-up opportunities due to their nature.

Medication Policy for Mountain Home Junior High Students:

If a student requires medication during the school day, the following guidelines must be followed:

Prescription Medications

- 1) Written consent from a parent/guardian is required.
- 2) Written consent from a physician is required.
- 3) Medication must be in its original container.
- 4) Medication must be stored and dispensed from the office.

Over the Counter Medications

- 1) Written consent from a parent/guardian is required.
- 2) Medication must be in its original container.
- 3) Medication must be stored and dispensed from the office.

Please contact the School Administration if you have any questions regarding this policy.

Network Services:

MHSD refers to Mountain Home School District. Network refers to network services, which includes voice and data information equipment, software, and the Internet. *Computers and the school district network are tools for students and staff to use for educational purposes to assist in meeting curriculum goals and objectives. Users are expected to abide by the generally accepted computer and network rules.*

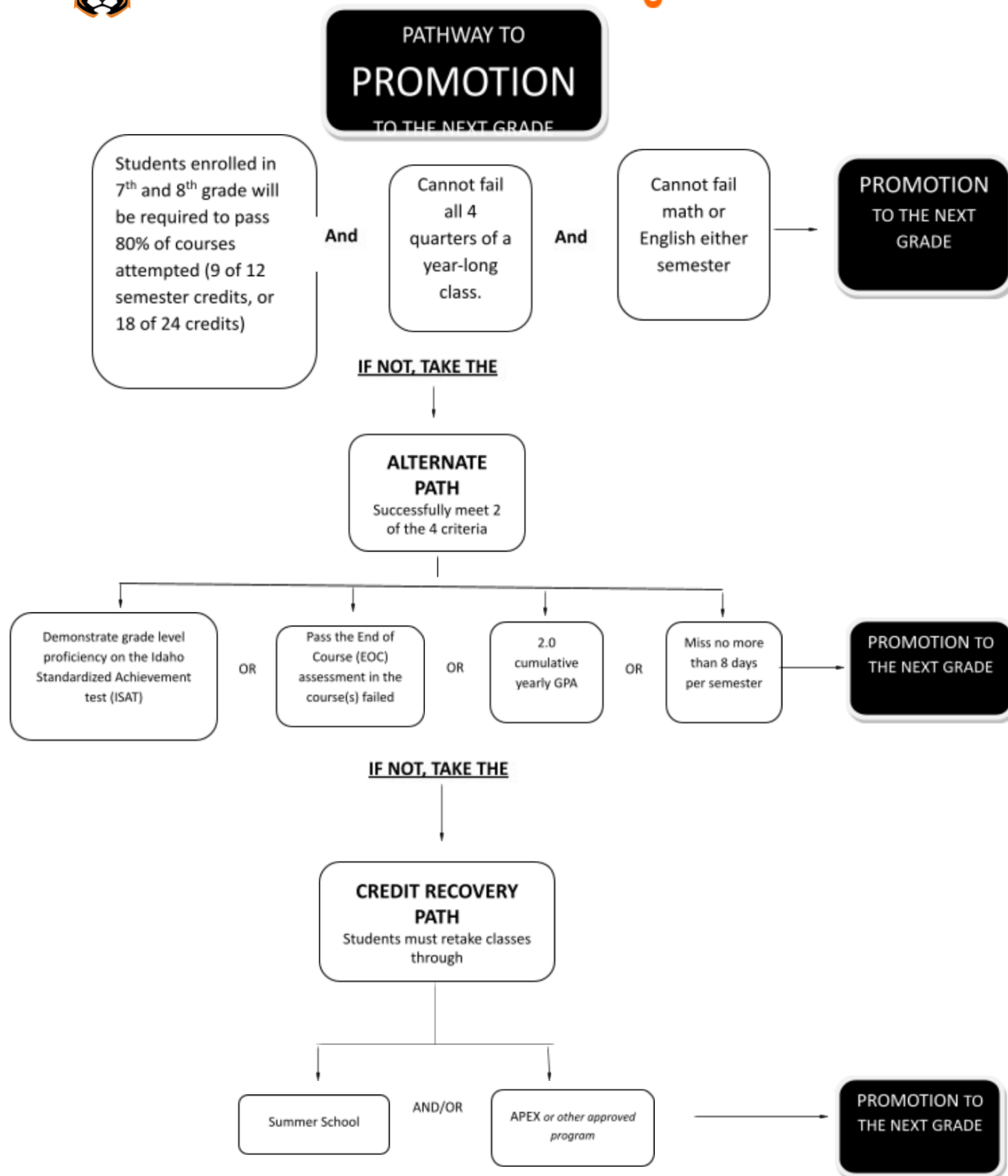
Non Academic Items:

Students are discouraged from bringing non academic items to school that could be considered a hindrance to the academic environment. Items such as lasers, toys and other items that have no academic value may be confiscated if they become a distraction to the academic environment.

PROMOTION PROCEDURES/CREDITS:



Mountain Home Junior High School



- Credit Recovery Path will be determined by the IEP or the 504 team for students with disabilities.
- LEP student's promotion will be determined by IELA scores or the Retention/District Team.
- Until the required courses are retaken, students will be retained in the previous grade level.
- For consideration to promotion of grade 9, a student must have met the math standards for grade 8.

Public Displays of Affection / No Touch Policy:

Students are expected to keep their hands and feet to themselves at all times. This includes, but is not limited to, public displays of affection, holding hands, kissing, horseplay, pushing, shoving, or bumping into others.

Violations of this policy may be considered minor or major offenses depending on the severity and will be addressed according to the school's discipline guidelines.

School Counselor:

Counseling services are available to all students. Services are provided on an individual basis, in small groups, and in a classroom setting. These services assist students with problem solving skills, decision making, and self-understanding. The better a student understands his or herself, the better able he or she is to respond to a problem, or to achieve personal growth. The school counselor is available to help each student and parent with development in three main areas: academic, career, and personal/social. To visit with the counselor, please sign up in the front office.

Society of Academic Excellence:

The Academic Excellence Society (AES) is dedicated to recognizing and encouraging outstanding junior high school students in grades 7-8. Being a member of the Academic Excellence Society shows that you are among the best students in your class, not just in academics but also in terms of leadership, good character, and citizenship.

To be considered for membership in the Mountain Home Junior High School Academic Excellence Society, a student must satisfy the following:

- Have attended the junior high 1st thru 3rd quarter
- Attained a GPA (grade point average) of 3.75 or above for the 1st, 2nd, and 3rd quarters.
- Maintained attendance as defined by the Mountain Home School District (present 90%) or more of the school days for the year)
- Leadership skills, good character, and citizenship qualities
- No major discipline referrals.
- Have high moral standards in congruence with the ideals of AES

Student Guest Policy:

Unfortunately, no student guests are permitted on campus due to district liability and insurance.

State Assessments:

Each spring, students will participate in the State's achievement test - the *Idaho Standard Achievement Test* or ISAT. They will be given grade level Math and English/Language Arts assessments. The results of the tests will help monitor student yearly progress. Student results will be made available to parents along with a brochure from the State that will provide parents with guidance on understanding their student's score report.

Violent Acts:

Any threats, whether spoken or written, as well as **bullying, cyberbullying, physical abuse, or violent behavior** that endangers the **health and safety** of students, staff, or visitors will not be tolerated. Such actions that disrupt the educational environment will lead to formal suspension procedures. Additionally, these cases will be referred to the Board of Trustees for consideration of possible expulsion.

1. **Harassment, intimidation, and/or bullying/cyber-bullying**, including, but not limited to, any intentional gesture or any intentional written, verbal, or physical acts or **threats**, against another student may be committed through any technology included, but not limited to, the use of landlines, cell phones, or through the use of data or computer software that is accessed through a computer, computer system, or computer network.
 - i. **Cyberbullying** is when someone uses the internet, social media, texts, or other online tools to say mean or hurtful things, spread rumors, or embarrass someone on purpose. Cyberbullying will not be tolerated.
2. If **cyber-bullying** was committed by a student away from school grounds, the building principal or designee may report the incident to local law enforcement. In addition, school authorities have the right to impose a consequence on a student for conduct away from school grounds, including on a school bus or at a school-sponsored function. **Students involved in cyberbullying may lose the privilege of having their cell phone on school grounds.**
3. **Weapons:** Bringing weapons on campus is strictly prohibited. Law enforcement will be involved if someone brings a weapon on campus and may be referred for district review for possible expulsion.

Withdrawing from School:

If you are leaving school, a parent/guardian must come to the counseling office, provide the last day you will be attending and where you are relocating, and sign the district withdrawal form.

TITLE I HOME-SCHOOL PARTNERSHIP

Effective schools are a result of families and school personnel working together to ensure that children are successful in school. This partnership is an agreement between several groups that firmly unites them.

Title I Vision Statement

The Title I staff of Mountain Home School District believes that all children can achieve academic success and grow to be productive citizens. Parents, students, and the Title I staff play a vital role in this process.

Title I Staff will:

- ◆ Inform the classroom teacher of the needs and abilities of the student.
- ◆ Use time and materials to increase student achievement.
- ◆ Regularly communicate with parents/ students/teacher about student progress.

Parent(s) will:

- ◆ Ensure that my child attends school regularly and is on time.
- ◆ Monitor the amount and content of my child's television watching.
- ◆ Read with my child every day or as often as possible.
- ◆ Attend school functions (Open House, programs, etc).
- ◆ Volunteer at school or provide assistance when possible.

Student will:

- ◆ Believe that I can and will learn
- ◆ Be responsible for my own behavior



MHJH Levels of Behavior and Consequences



All consequences are at the discretion of the administrative team.



Behaviors that impact only the student

Junk Behavior

- Not prepared for class/
- Out of seat w/o permission
- Not following directions
- Misuse of school supplies
- Playing in desk
- Not working
- Not participating/listening
- Copycat behaviors
- Leaning in chair
- Refusing to work
- Talking out of turn
- Visiting/Making noises
- Touching/Poking
- Playing in cafeteria
- Talking in line

Consequences

- Conference with Student~ Student meeting with administrator, teacher, and/or parent.
- Loss of Privilege~ Student being unable to participate in some type of privilege.
- Parent Contact~ Parent communication about the problem.
- Time-Out~ Student spending time in a specified area away from scheduled activities/classes.



Behaviors that interfere with the learning of others

Level 1- Minor

- Abusive Language/Inappropriate Language/Profanity~
- Disrespect~ Negative attitude/action towards another person.
- Disruption~ interfering with learning of others or themselves.
- Insubordination~ Defiance/Non-Compliance, failure to respond to adult requests.
- Peer Conflict~ Mutual disagreement or hostility between peers or peer groups.
- Physical Altercation~ Confrontation, or physical aggression.
- Property Misuse~ Misusing or damaging property, low intensity.
- Roughhousing~ Non-serious, but inappropriate physical contact.
- Technology Violation~ non-serious inappropriate use of technology.

Consequences

- Conference with Student~ Student meeting with administrator, teacher, and/or parent.
- Time in Office ~ Student spending time away from scheduled activities/classes in the office.
- Detention - lunch or other.
- Parent Contact~ Parent communication about the problem.
- Loss of Privilege~ Taking away a preferred activity including recess. May be prohibited from attending after school activities.
- Other Teacher/Para Decision~ Teacher/Para decision that is not listed.



Behaviors affect an orderly environment

Level 2- Major

- Bullying~ Act that is carried out repeatedly over time, imbalance of power, harm done intentionally, often unprovoked.
- Dishonesty/Cheating~ Lack of honesty or using an unapproved person/source to do work.
- Disrespect - vulgar language and/or gestures, negative attitude, towards staff and other students.
- Fighting~ Student is involved in mutual participation in an incident involving physical violence, or instigated a fight by provoking.
- Harassment~ Aggressive behavior focused on a student's race, national origin, color, age, religion, ethnic background, disability, sex, or sexual orientation that is persistent or pervasive.
- Obscene Behavior~ Physical activity of the human body, which represents or depicts any kind of sexual conduct.
- Theft~ Taking another person's property without permission.
- Vandalism~ Deliberate destruction of property.
- Insubordination~ Defiance/Non-compliance, continuous or high intensity failure to respond to adult requests.

Consequences

- Conference with Student~ Meeting with administrator, and/or parent.
- Parent Contact~ Parent contact about the problem.
- Detention - lunch or other.
- In-School Suspension~ Time spent away from scheduled activities/ classes.
- Restitution ~ Compensation for destructive behavior
- Out of School Suspension~ Time spent away from school.
- Loss of Privilege~ Taking away a preferred activity.
- Other Administrative Decision~ possible District Review.
- District Review~ A meeting with the student, parent/guardian, building principal, District Administration, and possibly a member(s) of the Mountain Home School Board.



Dangerous Behaviors

Level 3 - Severe

- Alcohol/Drugs/Tobacco/Vaping Possession or Use~ Student is in possession of or is using alcohol, drugs, tobacco, or vaping.
- School Threat/Threat/Intimidation~ A statement or action of intention to cause harm.
- Weapon~ Student is in possession of knives or guns (real or look alike) or other objects readily capable of causing bodily harm.

Consequences

- In-School Suspension~ Time spent away from scheduled activities/ classes.
- Out of School Suspension~ Time spent away from school.
- Threat Assessment~ by administrator and counselor.
- District Review~ A meeting with the student, parent/guardian, building principal, Superintendent of Schools, and possibly a member(s) of the Mountain Home School Board.
- Other Administrative Decision~ Administrative decision that is not listed.